

*"24 Hours Care Physiotherapy and
Rehabilitation Centre For Stroke, Spinal Cord
Injury, Head Injury and Other Paralysis
Patients"*

*"Recovering from a stroke and paralysis
requires time, patience and expertise"*

*Here at the stroke and paralysis rehabilitation unit, patients are cared
for by a multidisciplinary rehabilitation team led by consultant neuro-
physiotherapist, occupational therapist, rehabilitation nursing staff,
speech therapist, clinical psychologist.*



INDIAN
STROKE
& PARALYSIS CARE CENTER

*Transition between
hospital to home*

INDIAN STROKE & PARALYSIS CARE CENTER

Comprehensive Neuro & Spine Care

**Zone H-4-5, Plot No-5-6-7, Parwana
Road, Pitampura, Delhi- 110034.**

International Standard facility for Stroke & paralysis Care

01127010484 | +91-8448583867 | 09990970104 | 9818910029

www.aparchealthcare.com | info.aparc@gmail.com

We at our centre
customize the
rehab plan for
each individual
patients after
detail assessment.



Our goal is to help
you get back to living
your life.



Indian Stroke and Paralysis inpatient physiotherapy and rehabilitation centre based in pitampura Delhi is one of the best ,well equipped and cost effective centre for stroke and paralysis care and rehabilitation in India.

We provide 24 hour physiotherapy and rehabilitation care for stroke and other paralysis patients, our state-of-the-art facility provides initial care when patient need assistance and care post stroke and others disabling diseases and once patient became independent we follow up him in the day care treatment.

We see each patient as an individual and aim to work in partnership with our stroke patients and their families to ensure the best rehabilitation care and fullest possible recovery.



You and your loved one deserves the best rehab care program possible.

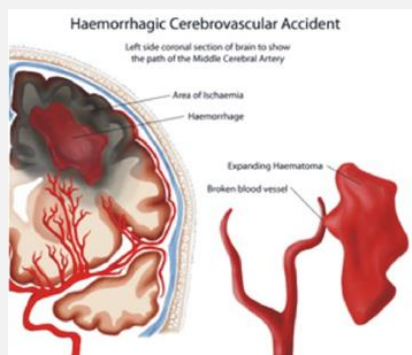
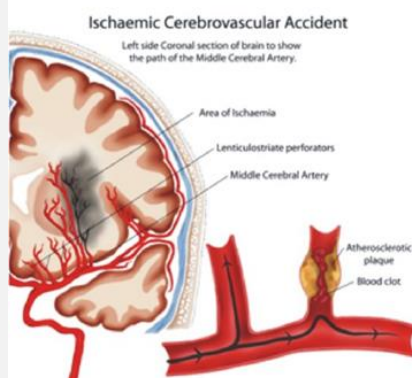
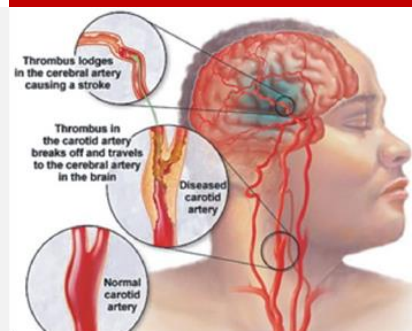
Stroke : A stroke occurs when the blood supply to part of the brain is interrupted by a blockage in the blood supply or when there is a hemorrhage due to a burst blood vessel.

If a patient has suffered or is suffering a stroke, they may experience weakness or paralysis in an arm and or leg, difficulty speaking, lost vision in part of the visual field or complain of numbness and / or tingling down one side of the body. It is imperative to seek urgent medical advice if any of these events occur.

Stroke Physiotherapy and Rehabilitation

The Stroke Unit is a specialized unit committed to providing the most effective and successful forms of treatments to rehabilitate patients. Treatment is patient-specific but our range of services are uniquely housed under one roof, making the entire process more comfortable for patients.

Stroke rehabilitation requires time, patience and expertise. Here at The Stroke Unit, patients are cared for by a multidisciplinary Stroke Care Team includes: Neurological physiotherapist, General Physician, Physiotherapist, Occupational Therapist, Speech and Language Therapist, Clinical Psychologist, Rehabilitation Nurses, Care givers, Dietician.



Staying With Us

treating each

Individual as a **whole**

Person & **not as an
disease**

Staying With Us

Staying with us is like a home from home; our aim is to make you feel as comfortable and relaxed as possible. You will enjoy state-of-the-art facilities, a caregiver on call, television, A.C, and a safe in your room. Fresh linen and towels are provided but you may wish to bring other personal items with you.

Specifically designed to meet every individual's needs, a delicious and varied menu is available to cater for your palate. Please make staff aware of any food allergies, intolerances or special dietary requirements you have.



“your brain can relearn maximum functions you lost after a brain stroke, It requires integrated program of rehab that you can't get at your home”



First Class Service

Our patients are cared for by a multidisciplinary rehabilitation care team led by consultant Neuro physiotherapist under guidance of neurologist and physician, and as per need we may shift patient from rehabilitation centre to other hospital if any medical emergency arise.



Rooms in ISPC Ward benefit from an abundance of natural light, whilst private bathrooms are fully equipped to function.

Large private rooms and rooms within ISPC Ward provide patients with the assurance that they are being treated in a specialist facility.



The ward also provides an expansive visitors room, where patients can enjoy time with their friends or family.

Our Post Stroke Assessment Check List

Secondary Prevention | Activities of Daily Living
Mobility Impairment | Spasticity | Pain
Communication Impairment | Mood &
Emotional Incontinence | Musculoskeletal Issues |
Emotional Changes | Cognition & Memory Issues
Weakness & Fatigue | Other Challenges | Lifestyle
changes After Stroke

Center for
Advanced Physiotherapy
Sports & Neurorehabilitation

- Our Specialization
- Stroke & Paralysis Rehabilitation
 - Spinal Cord Injury Rehabilitation
 - Spine / Back / Neck Pain Rehabilitation
 - Foot / Body Balance & Alignment Care
 - Pediatric / Cerebral Palsy Rehabilitation
 - Sports Related Injury Care & Rehabilitation

INTERNATIONAL
GUIDELINES
and Protocols

Suggest That A Well-Structured
Rehabilitation Plan Is Most
Beneficial For Stroke Patients.

Center strongly works as per international guidelines and
recommendations developed by various International
authorities working for stroke care

7:00am	Bathing , Grooming with the help of caregiver	3:00pm	Functional training, Motor relearning program (MRP) and specific treatment with latest machine like VRT, Mirror Therapy, Functional electrical stimulation.
8:00am	Yoga and Meditation		
9:00am	Breakfast		
9:30am	Physiotherapy session	4:00pm	Tea break
11:00am	Refreshment break	4:30pm	ADL Training and specific treatment with latest machine like Biofeedback, Partial body weight sup-ported treadmill training, Balance training, Gait training, Etc.
11:30am	Occupational therapy session / Speech therapy / Psychological counseling session		
1:00pm	Lunch	5:30pm	Break (Rest)
1:30pm	Rest	7:00pm	Playing Activity, Like Carom, Cards, Chess, Etc.
		8:00pm	Dinner

30 bedded 24 hour care facilities

20000 Square Feet Treatment Area

30 bedded 24 hour care residential facilities

Pick and drop facilities for day care patients

More than 100 patients getting treatment in day care

Latest Equipment's and Highly qualified and well trained staff

Day Care

Per Visit Payment

10 days Package

30 Days Package

Room

General ward

Semi-Private

Private Room

Packages Includes

Therapeutic Sessions | Nursing Care | General Care Giver Charges

Morning Tea | Breakfast | Lunch | Evening Tea | Dinner

all above food free for one attendant

Extra person staying with patient has to pay for food

Centre has well internationally trained physiotherapist and occupational therapist, dietitian, clinical phycologist, physician providing international standard of care. Specialized nursing care and well- trained caregiver staff providing general care support centre



INDIAN STROKE & PARALYSIS CARE CENTER

Comprehensive Neuro & Spine Care

**Zone H-4-5, Plot No-5-6-7, Parwana
Road, Pitampura, Delhi- 110034.**

International Standard facility for Stroke & paralysis Care



In association with



Managed by



01127010484 | +91-8448583867 | 09990970104 | 9818910029

www.aparchealthcare.com | info.aparc@gmail.com